

**COMPRESSOR**

Displacement (cm <sup>3</sup> )	5.98
Diameter (mm)	20.88
Stroke (mm)	17.47
Net Weight (Kg)	10.5
Oil type	ISO VG 46 ESTER
Oil charge (cm <sup>3</sup> )	350

**MOTOR**

Approximate Power (CV)	1/4
Voltage/Frequency (V/Hz)	220V 50Hz
Voltage range (V)	187-264
Code	63.133
Type	CSIR
Phase number	1 PH
Locked rotor current (A)	11.0
Main W. resist. at 25°C (Ω)	7.5
Start W. resist. at 25°C (Ω)	15.85

**APPLICATION**

Application	High/Mid. back pressure
Refrigerant	R404A
Evaporating (°C)	-25 to 10
Expansion	Capillar/Valve
Comp. cooling	Fan cooled
Max. ambient temp. (°C)	43

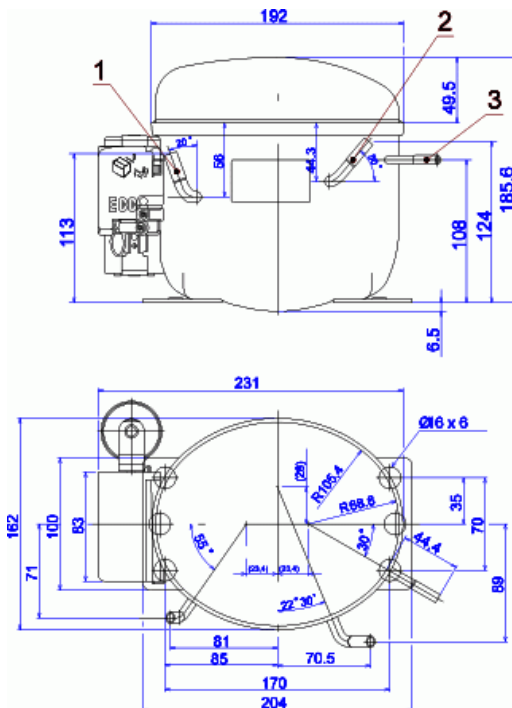
NOMINAL PERFORMANCE	CYCLE C	CYCLE D
Cooling capacity (kcal/h)	659	825
Input power (W)	433	446
EER (kcal/Wh)	1.52	1.85
COP (W/W)	1.76	2.15
Current (A)	2.44	2.49

**TEST CONDITIONS**

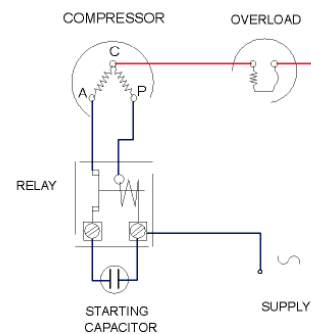
Evaporating temp. (°C)	5.0	7.2
Condensing temp. (°C)	55.0	55.0
Liq.t. entering expan. (°C)	55.0	46.0
Ambient t. and return (°C)	32.0	35.0
Tens/Freq (V/Hz)	220V 50Hz	220V 50Hz

**ELECTRICAL COMPONENTS**

Relay	2014 135.	
Pick-Up (A)	5,80	
Drop-Out (A)	4,95	
Protector	MRA38145	T0266/G.
Current (A)	14.9	11.0
Time check (seg)	2.8-5.2	7.5-14
Disc temp. (Open/Close) (°C)	105.0 / 52.0	105.0 / 52.0
Starting capacitor (μF/V)/F/V)	47- 56 / 330	

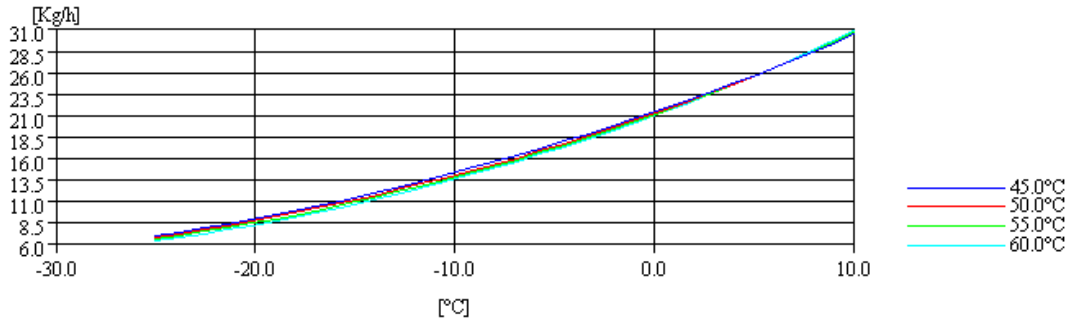
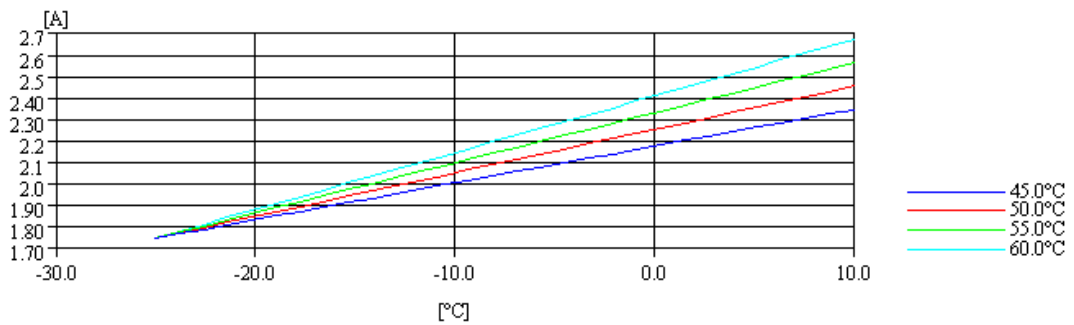
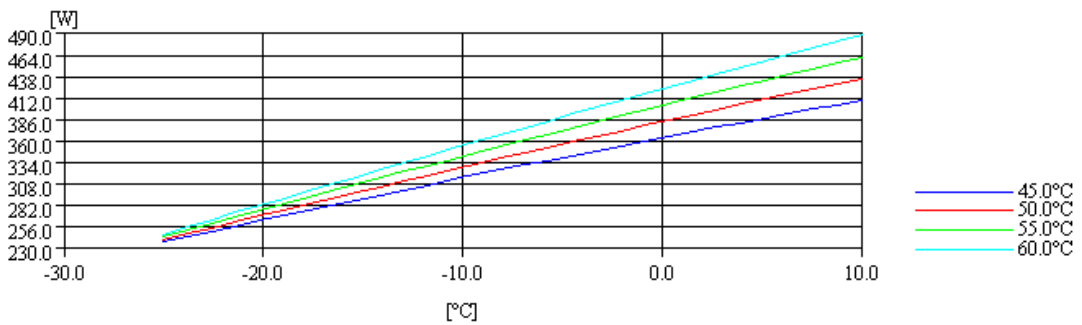
**DIMENSIONS AND ELECTRICAL DIAGRAM**


DESIGNATION	INTERNAL DIAM. (MM)
1 Suction	6,5
2 Service	6,5
3 Discharge	4,9

**CSIR**


**TEST CONDITIONS**

Voltage/frequency	220V 50Hz
Ambient t. and return	35 °C
Liq.t. entering expan.	Subcooling 9 K

**MASS FLOW**

**INTENSITY**

**CONSUMPTION**

**COOLING CAPACITY**
